

# DATASHEET

## EARMUFFS

PROTECTION AGAINST NOISE

**M1 6100****M2 6200****Hygiene Kit 6105**

### CHARACTERISTICS

The Moldex "M Series" earmuffs are ideal to protect from intermittent noise – or for those who cannot achieve a safe and comfortable fit with earplugs. Both muffs are made out of SoftCoat® material with exclusive iridescent colours.

All Moldex hearing products have been designed with the user in mind. High levels of comfort have been engineered into the products without compromising the optimal protection.



#### 100% PVC free

All Moldex products and packaging are completely free from PVC.

### CERTIFICATION

The Moldex range of hearing protection products meet the requirements of EN 352 and are CE-marked in accordance with the requirements of EU regulation (EU)2016/425.

Responsible for type examination (Module B): "M1": FIOH (0403) in Helsinki (Finland); "M2": IFA (0121) in St. Augustin (DE).

Responsible for monitoring of production of all products (Module D): IFA (0121) in St. Augustin (DE).

The products are manufactured in an ISO 9001 certified plant.

**Information for the UK market:** UKCA-marked in accordance with the requirements of PPE Regulation 2016/425 as brought into UK law and amended. Responsible for Module D surveillance: BSI-Assurance UK Ltd. (Identification number 0086), United Kingdom. UK Importer: Moldex/Metric AG & Co. KG · Unit 9, Glaisdale Point · Off Glaisdale Drive, Billborough · Nottingham. NG8 4GP · Tel. +44 (0)115 985 4288 · info@uk.moldex-europe.com

### ATTENUATION DATA

The Moldex "M Series" range of earmuffs passes the EN 352-1 minimum attenuation requirements set out in the table below. The APV<sub>i</sub> values (M<sub>i</sub>-S<sub>i</sub>) of the earmuffs must exceed the data in the table.

#### Minimum attenuation requirement (dB) EN 352

Freq. (Hz)	63	125	250	500	1000	2000	4000	8000
APV <sub>i</sub> (dB)	-	5.0	8.0	10.0	12.0	12.0	12.0	12.0

#### M1 (6100)

Freq. (Hz)	63*	125	250	500	1000	2000	4000	8000
M <sub>i</sub> (dB)	17.2	17.2	24.8	32.8	38.5	37.4	38.7	39.3
s <sub>i</sub> (dB)	3.5	3.5	3.3	2.8	2.7	2.7	2.7	3.8
APV <sub>i</sub> (dB)	13.6	13.6	21.5	30.0	35.8	34.8	36.1	35.5
Size: S/M/L	H = 36 dB M = 30 dB L = 21 dB <b>SNR = 33 dB</b>							

The full attenuation data tables for the Moldex earmuff "M2" (6200) is presented below. The "M2" can be worn in three positions. On head, behind neck or under chin in conjunction with head protection.



On head



Under chin



Behind neck

#### M2 (6200) A – M2 worn on head

Freq. (Hz)	63*	125	250	500	1000	2000	4000	8000
M <sub>i</sub> (dB)	12.8	12.8	20.8	28.0	35.2	34.1	36.8	36.5
s <sub>i</sub> (dB)	3.7	3.7	3.0	2.9	4.2	4.2	3.2	7.1
APV <sub>i</sub> (dB)	9.1	9.1	17.8	25.1	31.0	29.9	33.6	29.4
Size: M/L	H = 31 dB M = 26 dB L = 17 dB <b>SNR = 28 dB</b>							

#### M2 (6200) B – M2 under chin

Freq. (Hz)	63*	125	250	500	1000	2000	4000	8000
M <sub>i</sub> (dB)	14.4	14.4	22.4	29.4	34.8	36.3	39.5	40.7
s <sub>i</sub> (dB)	4.9	4.9	3.9	3.1	2.3	3.6	3.3	2.6
APV <sub>i</sub> (dB)	9.5	9.5	18.5	26.3	32.5	32.7	36.2	38.1
Size: M/L	H = 35 dB M = 27 dB L = 17 dB <b>SNR = 30 dB</b>							

#### M2 (6200) C – M2 worn behind neck

Freq. (Hz)	63*	125	250	500	1000	2000	4000	8000
M <sub>i</sub> (dB)	12.8	12.8	20.1	27.2	33.0	34.5	36.8	36.1
s <sub>i</sub> (dB)	4.4	4.4	3.5	4.1	3.5	3.8	4.8	5.8
APV <sub>i</sub> (dB)	8.4	8.4	16.6	23.1	29.5	30.7	32.0	30.3
Size: M/L	H = 31 dB M = 25 dB L = 16 dB <b>SNR = 27 dB</b>							

\*EN ISO 4869-2:1995. 125 Hz test values are used.

### MATERIALS

#### M1 (6100)

**Cup:** Polypropylene, TPE

**Cup-foam:** Polyurethane

**Cushion foam:** Polyurethane

**Cushion:** Polyurethane, TPE

**Cup yoke:** Polyacetale

**Head band:** Steel

**Head band cushion:** Polyurethane, TPE

#### M2 (6200)

**Cup:** Polypropylene, TPE

**Cup-foam:** Polyurethane

**Cushion foam:** Polyurethane

**Cushion:** Polyurethane, TPE

**Head band:** Polyacetale

**Flexible strap:** Polyurethane

# DATASHEET

## EARMUFFS

PROTECTION AGAINST NOISE



### WEIGHT

**M1 (6100):** 283 g      **M2 (6200):** 294 g

### TESTING

The "M Series" earmuffs have been tested to EN 352 and fulfill all requirements of the relevant categories.

#### Ignitability

The earmuffs will not ignite upon application of a heated rod, nor continue to glow after the removal of the heated rod.

#### Construction

All parts of the earmuffs are designed and manufactured so that they are not liable to cause physical damage to the wearer when fitted and used according to the instructions.

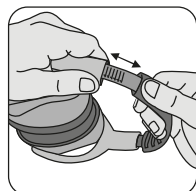
### INSTRUCTIONS FOR USE

- The earmuffs must be used in accordance with the relevant national legislation, and fitted, adjusted and maintained according to the user instructions.
- Warning: Disregarding the user and fitting instructions for these products can affect the product efficiency in protecting against noise.
- Check the earmuffs and cushions before use. Change them if they are damaged.
- Earmuffs, and in particular cushions, may deteriorate with use and should be examined at frequent intervals, for cracking and leakage for example.
- Products should be stored in a cool, non-contaminated and dry environment. They should not be exposed to direct sunlight or heat.
- The products may be adversely affected by direct contact with certain chemical substances (e.g. aromatic hydrocarbons).
- Earmuffs are reusable and should be cleaned with mild soap and water between uses.
- We suggest replacing cushions and inserts from the hygiene kit every 6 months. This will ensure optimum levels of comfort and protection are maintained. The fitting of "hygiene covers" to the cushions may affect the acoustic performance of the earmuffs.

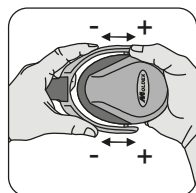
### INSTRUCTIONS FOR FITTING M1 (6100)



1. When putting on the earmuff, the headband needs to be positioned in the middle of the head and the cushions need to cover the ears.



2. The position of the muff can be changed by moving the headband.



3. The cushions must be close to the head. No parts such as glasses sidepieces or headstraps from a respirator must be placed between the head and the pads.

### INSTRUCTIONS FOR FITTING M2 (6200)

Please note: In Conjunction with head protection M2 can be worn under chin (B) or behind neck (C).



#### A. M2 on head

When putting on the earmuff, the headband needs to be positioned in the middle of the head and the cushions need to cover the ears.



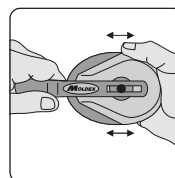
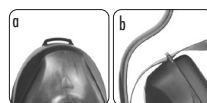
#### B. M2 under chin

When putting on the earmuff with the headband under chin, the black/flexible strap needs to be inserted in the loop on the top of the cups (see: a + b) and position the strap in the middle of the head. The cushions need to cover the ear.



#### C. M2 behind neck

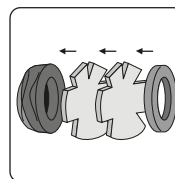
When putting on the earmuff with the headband behind neck, the black/flexible strap needs to be inserted in the loop on the top of the cups (see: a + b) and position the strap in the middle of the head. The cushions need to cover the ear.



The position of the cup can be changed by moving the headband.

If the M2 is worn behind the neck, select the smallest head band size.

### HYGIENE KIT (6105)



The foam inserts and cushions are detachable and can be replaced by spare parts from the "hygiene kit" (product Number 6105).

### INFO

For help on selection and training please contact us.  
We offer a wide range of training packages and support material.

Moldex/Metric AG & Co. KG  
Unit 9, Glaisdale Point  
Off Glaisdale Drive, Bilborough  
Nottingham. NG8 4GP

Tel.: +44 (0)115 985 4288  
Fax: +44 (0)115 985 4211  
www.moldex-europe.com  
info@uk.moldex-europe.com